



6/2 Corinna Street LYONS, ACT



2



1



1

## ?Melrose Gardens?

Ready, set, buy! This first floor two-bedroom apartment is located on the doorstep of Westfield Woden and only a short stroll from the Woden Bus interchange. It's convenient position within the development offers a leafy outlook over the lawn area and the bonus of reduced traffic noise.

**Price:** \$372500  
**EER:** 4.5

This apartment is sure to appeal to many, so don't delay your inspection!

Features include:

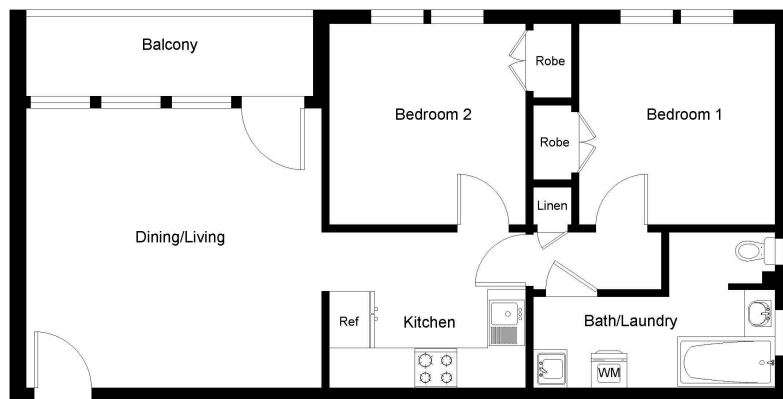
- End unit in complex
- Secure first floor position
- Covered balcony
- Loads of natural light
- Carport



**Tom Ellis**

0412 622 006

**Ashleigh Curtis**



FLOOR PLAN

This floor plan including furniture, fixture measurements and dimensions are approximate and for illustrative purposes only.  
BoxBrownie.com gives no guarantee, warranty or representation as to the accuracy and layout.  
All enquiries must be directed to the agent, vendor or party representing this floor plan.

6/2-8 Corinna Street Lyons ACT 2606